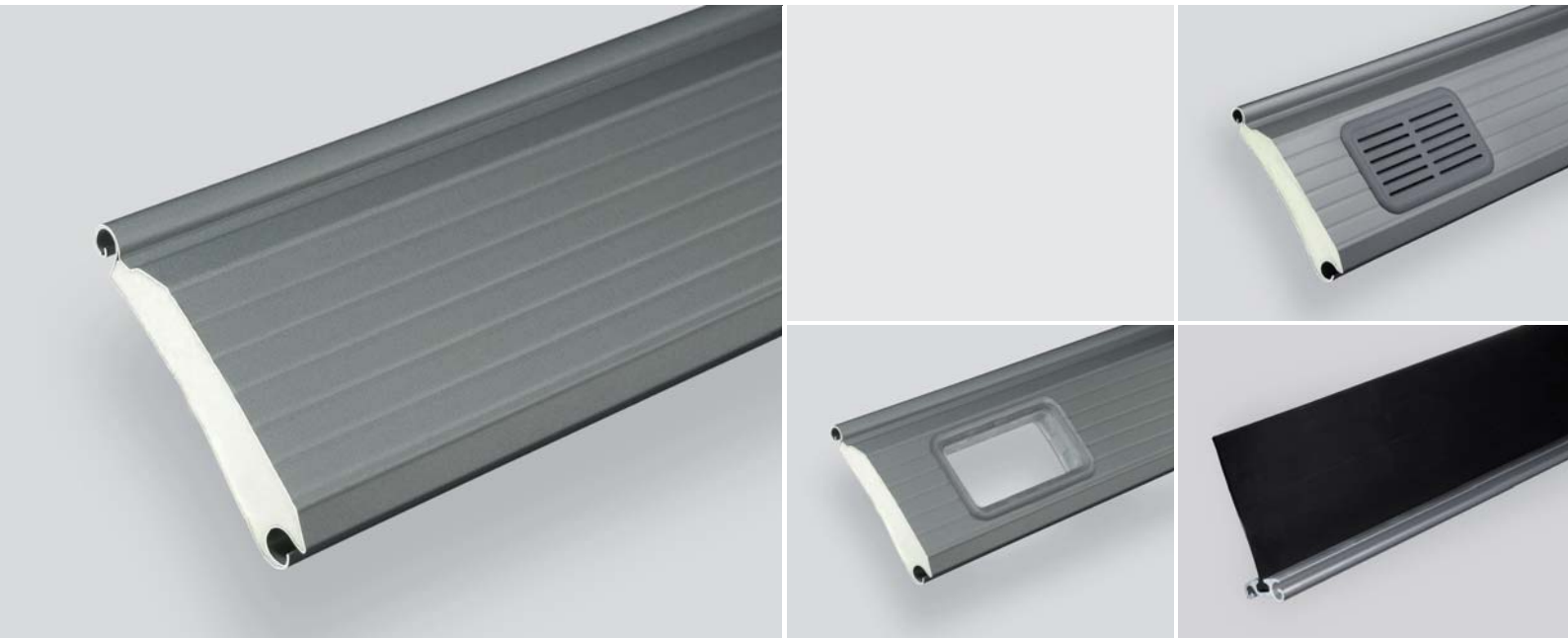


High Quality  
**Roller Shutter Profile 95 R**

for light and  
heat-insulating roller shutters.

ferdinand  
**brasellmann..au**  
Diversity in profiles

# Roller shutter profile 95 R



95 R is an insulated roller shutter profile with the outstanding feature of reduced weight. The standard lath in 0.38 mm galvanized steel with transparent coating is comparable in weight to a 1.100 D aluminium lath.

Thanks to the slightly curved form, this profile moves very quietly.

The recommended choice for roller shutter doors especially when low self-weight and small bale diameter are required.

Available in steel, with coloured coating in all RAL-colours or coil coating in colours like RAL 3000, 5010, 6009, 7005, 7016, 7044, 8014, 9002, 9006, 9007 and 9016 on request.

Designed and manufactured in Germany, assembled in Australia.

## • technical details

insulated PU-filled profile

material: 0.38 mm galvanized steel  
0.47 mm aluminium (on request)

slats on 1 m height: 10.2  
thickness of slats: ca. 23 mm

## • weight

steel: ~ 0.93 kg/m (9.8 kg/m<sup>2</sup>)  
window profiles: ~ 10.6 kg/m<sup>2</sup>  
aluminium (on request): ~ 0.47 kg/m (4.9 kg/m<sup>2</sup>)  
window profiles: ~ 6.8 kg/m<sup>2</sup>

## • maximum door size at wind class 2 (without storm hooks)

steel: W 6500 mm x H 6000 mm  
aluminium (on request): W 5000 mm x H 4500 mm

## • calculated bale diameter

opening height	tube diameter			
	133 mm	159 mm	194 mm	219 mm
2 m	300 mm	310 mm	340 mm	360 mm
2.5 m	340 mm	360 mm	350 mm	360 mm
3 m	360 mm	370 mm	380 mm	400 mm
3.5 m	380 mm	390 mm	380 mm	400 mm
4 m	400 mm	390 mm	420 mm	430 mm
4.5 m	420 mm	420 mm	420 mm	430 mm
5 m	420 mm	420 mm	450 mm	440 mm
5.5 m	460 mm	420 mm	460 mm	480 mm
6 m	460 mm	470 mm	470 mm	480 mm
6.5 m	490 mm	470 mm	500 mm	520 mm

*(If a sealing strip is applied the bale diameter increases for at least 20-30 mm)*