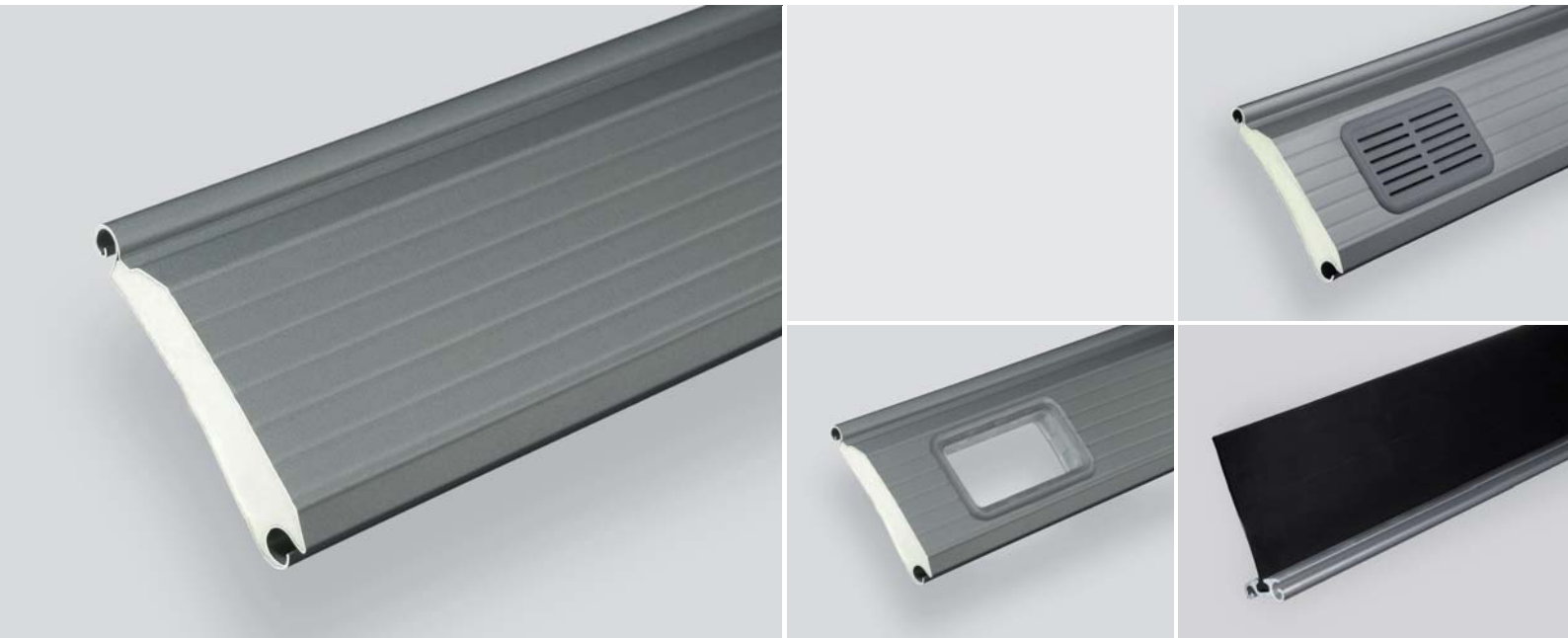


High Quality
Roller Shutter Profile 95 R

for light and
heat-insulating roller shutters.

ferdinand
brasellmann.au
Diversity in profiles

Roller shutter profile 95 R



95 R is an insulated roller shutter profile with the outstanding feature of reduced weight. The standard lath in 0.38 mm galvanized steel with transparent coating is comparable in weight to a 1.100 D aluminium lath.

Thanks to the slightly curved form, this profile moves very quietly.

The recommended choice for roller shutter doors especially when low self-weight and small bale diameter are required.

Available in steel, with coloured coating in all RAL-colours or coil coating in colours like RAL 3000, 5010, 6009, 7005, 7016, 7044, 8014, 9002, 9006, 9007 and 9016 on request.

Designed and manufactured in Germany, assembled in Australia.

• technical details

insulated PU-filled profile

material: 0.38 mm galvanized steel
0.47 mm aluminium (on request)

slats on 1 m height: 10.5
thickness of slats: ca. 23 mm

• weight

steel: ~ 0.93 kg/m (9.8 kg/m²)
window profiles: ~ 10.6 kg/m²
aluminium (on request): ~ 0.47 kg/m (4.9 kg/m²)
window profiles: ~ 6.8 kg/m²

• maximum door size at wind class 2 (without storm hooks)

steel: W 6500 mm x H 6000 mm
aluminium (on request): W 5000 mm x H 4500 mm

• calculated bale diameter

| opening height | tube diameter | | | |
|----------------|---------------|--------|--------|--------|
| | 133 mm | 159 mm | 194 mm | 219 mm |
| 2 m | 300 mm | 310 mm | 340 mm | 360 mm |
| 2.5 m | 340 mm | 360 mm | 350 mm | 360 mm |
| 3 m | 360 mm | 370 mm | 380 mm | 400 mm |
| 3.5 m | 380 mm | 390 mm | 380 mm | 400 mm |
| 4 m | 400 mm | 390 mm | 420 mm | 430 mm |
| 4.5 m | 420 mm | 420 mm | 420 mm | 430 mm |
| 5 m | 420 mm | 420 mm | 450 mm | 440 mm |
| 5.5 m | 460 mm | 420 mm | 460 mm | 480 mm |
| 6 m | 460 mm | 470 mm | 470 mm | 480 mm |
| 6.5 m | 490 mm | 470 mm | 500 mm | 520 mm |

(If a sealing strip is applied the bale diameter increases for at least 20-30 mm)