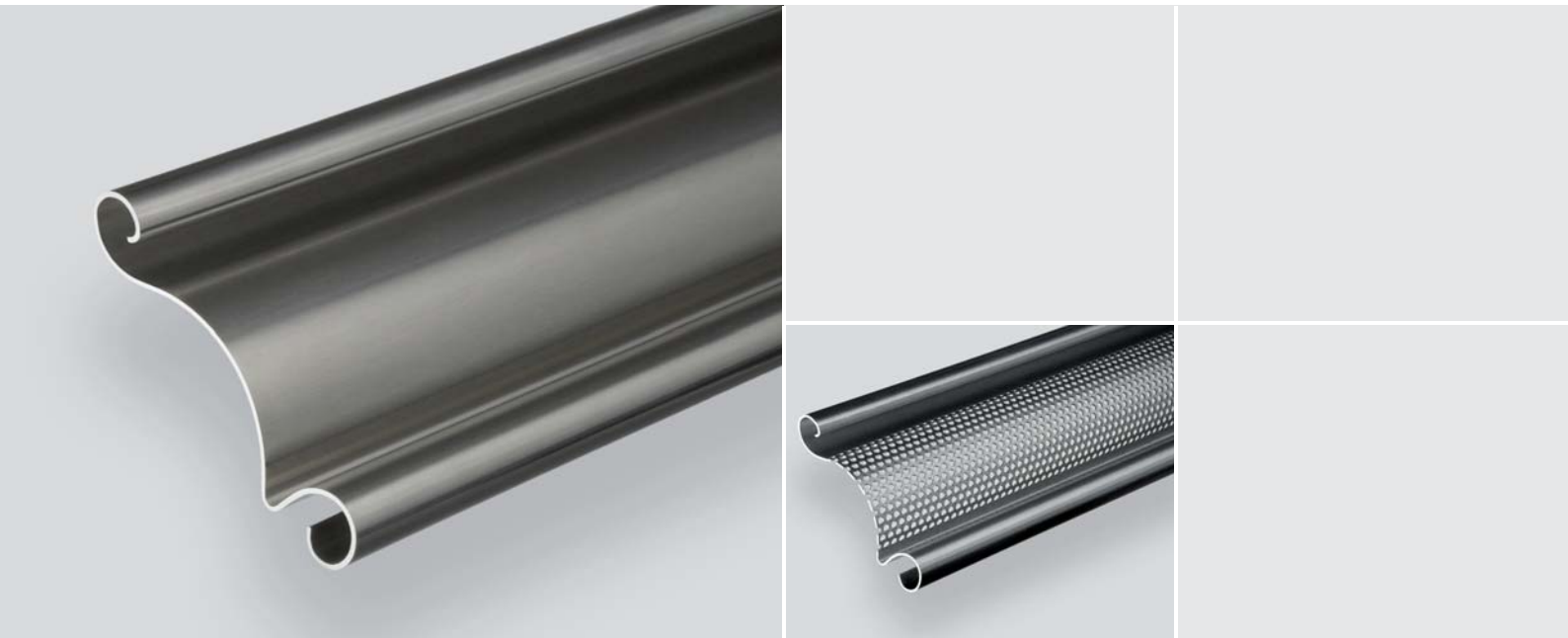


High Quality Roll Formed Aluminium
Roller Shutter Profile 1460

extra strong,
for large roller shutter doors
and increased loads.

ferdinand
brasellmann..au
Diversity in profiles

Roller shutter profile 1460



The unique roll formed design of the 1460 roller door profile makes it the first choice for single wall roller shutter doors with increased loads, e.g. large door dimensions or high wind loads.

Also available in galvanized steel or stainless steel, material thickness 1.0 mm and 2.0 mm, anodized or powder colour coated on request.

• technical details

height: 97 mm (10.3 slats per metre)
thickness of slats: ~ 25 mm

• weight (at 1.00 mm)

aluminium ~ 0,56 kg/m (5,77 kg/m²)
steel*, stainless steel* ~ 1,64 kg/m (16,9 kg/m²)

• maximum door width [mm] (wind class 2, without storm hooks)

| | 1.00* | 1.25 | 1.5 | 2.00* |
|--------------------------|-------|------|-------|-------|
| aluminium | 6000 | 6500 | 7500 | 8600 |
| steel*, stainless steel* | 8400 | 9600 | 10500 | 12000 |

• material thickness [mm]

| | 1,00* | 1,25 | 1,50 | 2,00* |
|-----------------------------------|-------|----------------|------|-------|
| aluminium, bright | • | • ^P | • | • |
| aluminium, colour coated* | • | • ^P | • | • |
| aluminium, plastic colour coated* | • | • | | |
| aluminium, anodized 3μ* | • | • ^P | • | |
| aluminium, anodized 20μ* | • | • | • | |
| steel, galvanized* | • | • ^P | • | • |
| steel, colour coated* | • | • ^P | • | • |
| stainless steel* | • | | | |

* on request

^P = perforated plate available

• calculated bale diameter (with top rail 1.1230)

| opening height | tube diameter [mm] | | | | | | |
|----------------|--------------------|-----|-----|-----|-----|-----|-----|
| | 159 | 169 | 194 | 219 | 267 | 324 | 368 |
| 3 m | 390 | 390 | 400 | 420 | 440 | 480 | 520 |
| 3,5 m | 400 | 410 | 410 | 430 | 470 | 500 | 540 |
| 4 m | 420 | 440 | 440 | 460 | 480 | 510 | 540 |
| 4,5 m | 440 | 440 | 440 | 460 | 490 | 530 | 580 |
| 5 m | 460 | 470 | 480 | 480 | 510 | 540 | 580 |
| 6 m | 500 | 500 | 500 | 520 | 530 | 560 | 610 |
| 7 m | 520 | 520 | 520 | 550 | 570 | 600 | 620 |
| 8 m | | 550 | 560 | 560 | 600 | 620 | 660 |
| 10 m | | | 600 | 620 | 640 | 660 | 700 |